



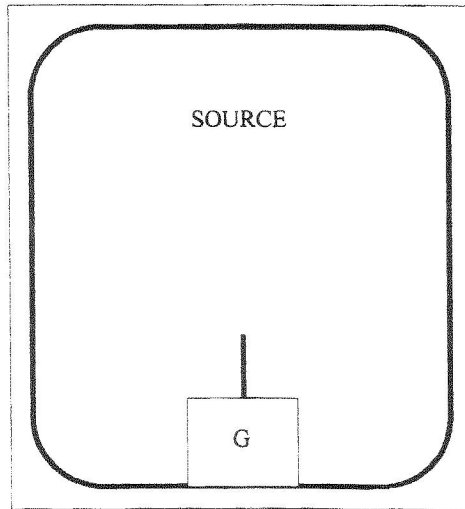
# Sierra Components, Inc.

2222 Park Place • Suite 3E • Minden, Nevada 89423

Phone: 775.783.4940 Fax: 775.783.4947

Chip back potential is the level which bulk silicon is maintained by on-chip connection, or it is the level to which the chip back must be connected when specifically stated below. If no potential is given the chip back should be isolated.

120 mils



106 mils

Top Material: Al  
Backside Material: CrNiAg  
Bond Pad Size: 0.021" square  
Backside Potential: Drain  
Mask Ref: Gen 5 N

APPROVED BY: RB

DIE SIZE : 0.106" x 0.120"

DATE: 4/5/10

MFG: IR

THICKNESS: 0.016"

P/N: IRFC9530N